



MCL-Link Lite Version 2.11



User's Guide





72E-43402-01
Revision A — October 2000

MCL-Link Lite Version 2.11
User's Guide

72E-43402-01
Revision A
October 2000



© 2000 by Symbol Technologies, Inc. All rights reserved.

No part of this publication may be reproduced or used in any form, or by any electrical or mechanical means, without permission in writing from Symbol. This includes electronic or mechanical means, such as photocopying, recording, or information storage and retrieval systems. The material in this manual is subject to change without notice.

The software is provided strictly on an “as is” basis. All software, including firmware, furnished to the user is on a licensed basis. Symbol grants to the user a non-transferable and non-exclusive license to use each software or firmware program delivered hereunder (licensed program). Except as noted below, such license may not be assigned, sublicensed, or otherwise transferred by the user without prior written consent of Symbol. No right to copy a licensed program in whole or in part is granted, except as permitted under copyright law. The user shall not modify, merge, or incorporate any form or portion of a licensed program with other program material, create a derivative work from a licensed program, or use a licensed program in a network without written permission from Symbol. The user agrees to maintain Symbol’s copyright notice on the licensed programs delivered hereunder, and to include the same on any authorized copies it makes, in whole or in part. The user agrees not to decompile, disassemble, decode, or reverse engineer any licensed program delivered to the user or any portion thereof.

Symbol reserves the right to make changes to any software or product to improve reliability, function, or design.

Symbol does not assume any product liability arising out of, or in connection with, the application or use of any product, circuit, or application described herein.

No license is granted, either expressly or by implication, estoppel, or otherwise under any Symbol Technologies, Inc., intellectual property rights. An implied license only exists for equipment, circuits, and subsystems contained in Symbol products.

Symbol, Spectrum One, and Spectrum24 are registered trademarks of Symbol Technologies, Inc. MCL, MCL-Designer, MCL-Link, MCL-Link Lite, MCL-Loader, and MCL-Net S24 are trademarks of Zetes Technologies S.A. Other product names mentioned in this manual may be trademarks or registered trademarks of their respective companies and are hereby acknowledged.

Symbol Technologies, Inc.
One Symbol Plaza
Holtsville, New York 11742-1300
<http://www.symbol.com>



Contents

About This Guide

Notational Conventions	v
Related Publications	vi
Service Information	vi
Symbol Support Center	vii

Chapter 1. Getting Started

Introduction	1-1
Installation	1-2
MCL-Link Lite Operating Modes	1-3
Starting MCL-Link Lite	1-3
Communication Setup	1-5
Protocol	1-6
Dx Packet	1-7
Interface	1-8
Using MCL-Link Lite	1-10
Status	1-10
Receive	1-10
Send	1-12
Time	1-14
About MCL-Link Lite Files	1-14
MCL-Link Lite Configuration File	1-14
MCL-Link Error File	1-19
Troubleshooting	1-20

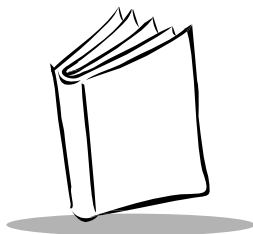


Chapter 2. Command File

Introduction	2-1
Syntax of Commands	2-2
Commands Received From the Terminal	2-3
Receive Data Packet (D0-D9) From Terminal	2-3
File Look-Up (CR) From Terminal	2-4
Transmit Remote Data File (TF) From Terminal	2-5
Remote Data File Request (FR) From Terminal	2-6
Host Status Request (SR) From Terminal	2-7
Quit MCL-Link (QX) From Terminal	2-8

Index

Feedback



About This Guide

The *MCL-Link Lite Version 2.11 User's Guide* provides general information about operating the MCL-Link Lite application, configuring the software, and using MCL-Link Lite commands.

Notational Conventions

The following conventions are used in this document:

- “Operator” and “User” refer to anyone using the MCL-Link Lite software.
- “PC” refers to the IBM personal computer or compatible system that you are using to develop applications.
- “Terminal” refers to various types of Symbol terminals.
- “You” refers to the administrator or person who is using this guide as a reference aid to install, configure, and/or operate the software.
- Keystrokes in bold type indicate non-alphanumeric keystrokes. For example: Select the <**F1**> key on the terminal to access on-line help.
- **Bold** type identifies menu items and input or text fields on a terminal screen.
- *Italics* are used:
 - for the names of parameters in function prototypes and variable names in usage and syntax descriptions
 - to highlight specific items in the general text
 - to identify chapters and sections in this and related documents.
- Square brackets [] in a command line enclose optional command line parameters.
- The piping symbol | has the effect of “or” when it is used to separate inline parameters on a command line; i.e., it separates alternative values for parameters.



- Bullets (•) indicate:
 - action items
 - lists of alternatives
 - lists of required steps that are not necessarily sequential
- Sequential lists (e.g., those that describe step-by-step procedures) appear as numbered lists.

Related Publications

The following is a list of documents that you may find useful if you want to know more about the MCL-Link Lite program.

- *MCL-Loader User's Guide*
p/n 70-33347-xx
- *MCL-Net S24 User's Guide*
p/n 70-33348-xx
- *MCL-Designer User's Guide*
p/n 70-33345-xx

Service Information

If you have a problem with your equipment, contact the [Symbol Support Center](#). Before calling, have the model number, serial number, and several of your bar code symbols at hand.

Call the Support Center from a phone near the equipment so that the service person can try to talk you through your problem. If the equipment is found to be working properly and the problem is symbol readability, the Support Center will request samples of your bar codes for analysis at our plant.

If your problem cannot be solved over the phone, you may need to return your equipment for servicing. If that is necessary, you will be given specific directions.

Note: *Symbol Technologies is not responsible for any damages incurred during shipment if the approved shipping container is not used. Shipping the units improperly can possibly void the warranty. If the original shipping container was not kept, contact Symbol to have another sent to you.*

Symbol Support Center

For service information, warranty information or technical assistance contact or call the Symbol Support Center in:

United States

Symbol Technologies, Inc.
One Symbol Plaza
Holtsville, New York 11742-1300
1-800-653-5350

United Kingdom

Symbol Technologies
Symbol Place
Winnersh Triangle, Berkshire RG41 5TP
United Kingdom
0800 328 2424 (Inside UK)
+44 208 945 7529 (Outside UK)

Australia

Symbol Technologies Pty. Ltd.
432 St. Kilda Road
Melbourne, Victoria 3004
1-800-672-906 (Inside Australia)
+61-3-9866-6044 (Outside Australia)

Denmark

Symbol Technologies AS
Gydevang 2,
DK-3450 Allerod, Denmark
7020-1718 (Inside Denmark)
+45-7020-1718 (Outside Denmark)

Canada

Symbol Technologies Canada, Inc.
2540 Matheson Boulevard East
Mississauga, Ontario, Canada L4W 4Z2
905-629-7226

Asia/Pacific

Symbol Technologies Asia, Inc.
230 Victoria Street #04-05
Bugis Junction Office Tower
Singapore 188024
337-6588 (Inside Singapore)
+65-337-6588 (Outside Singapore)

Austria

Symbol Technologies Austria GmbH
Prinz-Eugen Strasse 70
Suite 3
2.Haus, 5.Stock
1040 Vienna, Austria
1-505-5794 (Inside Austria)
+43-1-505-5794 (Outside Austria)

Europe/Mid-East Distributor Operations

Contact your local distributor or call
+44 118 945 7360



Finland

Oy Symbol Technologies
Kaupintie 8 A 6
FIN-00440 Helsinki, Finland
9 5407 580 (Inside Finland)
+358 9 5407 580 (Outside Finland)

Germany

Symbol Technologies GmbH
Waldstrasse 68
D-63128 Dietzenbach, Germany
6074-49020 (Inside Germany)
+49-6074-49020 (Outside Germany)

Latin America Sales Support

7900 Glades Road
Suite 340
Boca Raton, Florida 33434 USA
1-800-347-0178 (Inside United States)
+1-561-483-1275 (Outside United States)

Netherlands

Symbol Technologies
Kerkplein 2, 7051 CX
Postbus 24 7050 AA
Varsseveld, Netherlands
315-271700 (Inside Netherlands)
+31-315-271700 (Outside Netherlands)

France

Symbol Technologies France
Centre d'Affaire d'Antony
3 Rue de la Renaissance
92184 Antony Cedex, France
01-40-96-52-21 (Inside France)
+33-1-40-96-52-50 (Outside France)

Italy

Symbol Technologies Italia S.R.L.
Via Cristoforo Columbo, 49
20090 Trezzano S/N Navigilo
Milano, Italy
2-484441 (Inside Italy)
+39-02-484441 (Outside Italy)

Mexico

Symbol Technologies Mexico Ltd.
Torre Picasso
Boulevard Manuel Avila Camacho No 88
Lomas de Chapultepec CP 11000
Mexico City, DF, Mexico
5-520-1835 (Inside Mexico)
+52-5-520-1835 (Outside Mexico)

Norway

Symbol Technologies
Trollasveien 36
Postboks 72
1414 Trollasen, Norway
66810600 (Inside Norway)
+47-66810600 (Outside Norway)

South Africa

Symbol Technologies Africa Inc.
Block B2
Rutherford Estate
1 Scott Street
Waverly 2090 Johannesburg
Republic of South Africa
11-4405668 (Inside South Africa)
+27-11-4405668 (Outside South Africa)

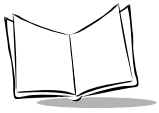
Spain

Symbol Technologies S.A.
Edificio la Piovera Azul
C. Peonias, No. 2 - Sexta Planta
28042 Madrid, Spain
9-1-320-39-09 (Inside Spain)
+34-9-1-320-39-09 (Outside Spain)

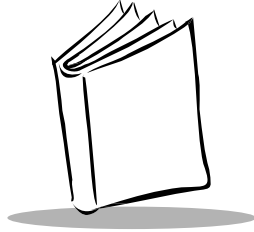
Sweden

Symbol Technologies AB
Albygatan 109D
Solna
Sweden
84452900 (Inside Sweden)
+46 84452900 (Outside Sweden)

If you purchased your Symbol product from a Symbol Business Partner, contact that Business Partner for service



MCL-Link Lite Version 2.11 User's Guide



Chapter 1

Getting Started

Introduction

MCL-Link Lite is a subset of the full MCL-Link Communication program. It is designed to support the Symbol P360/460/370 and 470 family of Memory and Cordless Scanners only.

MCL-Link Lite is fully compatible with the MCL-Link Full version. However, some commands are not available in MCL Link Lite version.

The following restrictions apply in MCL-Link Lite:

- Terminal model: MCL-Link Lite communicates with the Symbol P360, P370, P460 and P470 Memory and Cordless Scanners only
- Terminal ID: The terminal ID must be 001 or 002. No other terminal ID's are supported.
- Functions not supported:
 - Script function
 - Manually started from the operator console
 - Run script on terminal request
 - Run script on external application request
 - ODBC commands
 - Remote file operations
 - Keyboard Entry emulation
 - DLL interface



Installation

MCL-Link Lite is part of the MCL Collection of software. It can be installed separately or as part of the whole MCL Collection series. To install MCL-Link Lite from the MCL Collection CD:

1. Insert the MCL-Collection for Phaser CD-ROM disk into the CD-ROM drive.
2. Click the *Start* button on the task bar.
3. Select **Run**.
4. Type **D:\setup.exe** and click *OK* (replace D: with the CD-ROM drive letter).
5. Click *Next* when the introductory screen appears.
6. Click *Yes* to accept the license agreement.
7. When prompted, type your name and company in the appropriate fields. Click *Next*.
8. Click *Next* to accept the default directory or click *Browse* to select a different directory. Click *OK*, then *Next*.
9. Click *Next* to install all the MCL programs, or select **MCL-Link Lite** and de-select all the other options.
10. Click *Next* to accept the MCL-Collection for Phaser program folder.
11. Setup installs the selected programs onto the hard drive. A screen that monitors the progress appears. When installation is complete, click **Finish**.

MCL-Link Lite Operating Modes

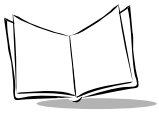
MCL-Link Lite can receive commands:

- From the user buttons.
On the supervisor's screen, buttons activate specific commands like:
 - request terminal status
 - send date and time to the terminal
 - send programs and data files to the terminal
 - request programs and data files from terminal.
- From the terminal.
MCL-Link Lite is able to receive commands from terminal. The communication process is controlled by the program written in the terminal. (See *Commands Received From the Terminal* on page 2-3).

Starting MCL-Link Lite

There are three ways to start the MCL-Link Lite program:

- double-clicking on the MCL-Link Lite V2.11 icon on the desktop
- from the standard Run window
- from an application.



The MCL-Link Lite window displays.

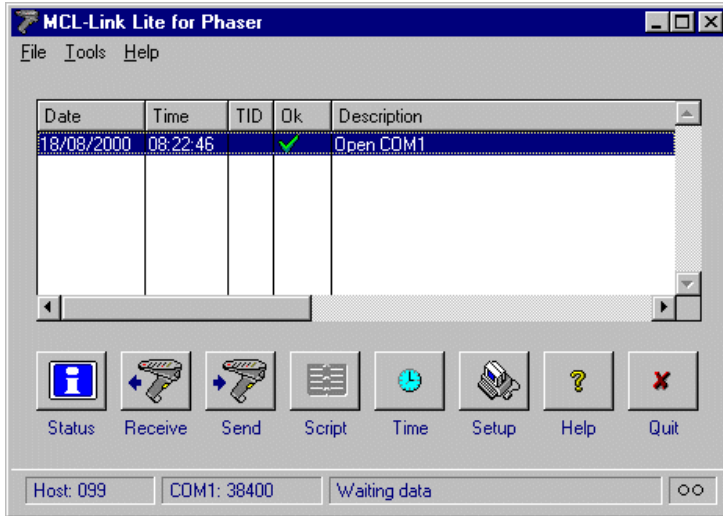


Figure 1-1. MCL-Link Lite Window

The list below describes the functions of the buttons on the MCL-Link Lite window.

Button	Description
Status	Requests terminal status.
Receive	Receives data from the terminal.
Send	Sends data to the terminal.
Time	Enables MCL-Link Lite to synchronize the terminal's time.
Setup	Sets the host communication parameters.
Help	Opens the MCL-Link Lite on-line help application.
Quit	Terminates the MCL-Link Lite program.

Communication Setup

To set up the host communication port, click on the *Setup* button in the MCL-Link Lite window. The *MCL-Link Setup* window appears.

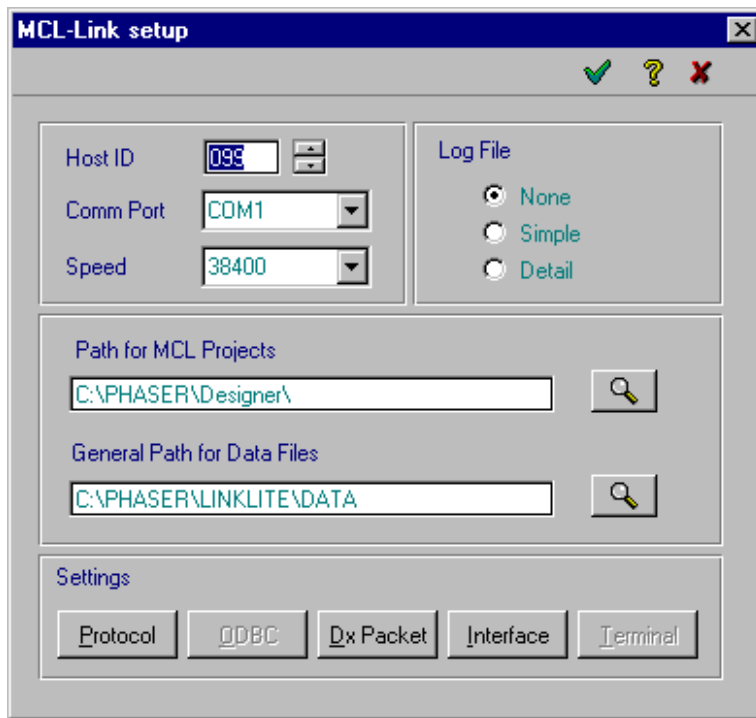


Figure 1-2. MCL-Link Setup Window

To set up communications:

1. In the *Host ID* field, select the host identification number.
2. In the *Comm Port* list box, select the communication port that matches the one the terminal is plugged into on the host computer.
3. In the *Speed* list box, select the speed of the terminal communication port.
4. Click one of the *Log File* radio buttons to select the type of Log File to generate.



5. In the *Path for MCL Projects* field, select the directory where the MCL-Designer projects are located.
6. In the *General Path for Data Files* field, select the directory where the project data files are located.
7. Click on the *OK* button when done or the *Cancel* button to terminate the operation.

Protocol

This dialog box defines how MCL-Link Lite formats addresses and handles file transfer on the network. This applies only to the addresses formatted on the network.

Click on the *Protocol* button and the *Protocol* dialog box appears.

Setup: Protocol

Protocol: 14

Bloc Size: 512 Bytes

TimeOut: 2500 mSec

Retry: 3

Default

Use Modem

Modem TimeOut: 30 Sec

Reset Command: ATZ0

Initialization Command: ATS0=1

Answer incoming calls (RING)

Figure 1-3. Setup: Protocol Dialog Box

Field	Definition
Block Size	Maximum block size for transmitting frames on the network. (The maximum frame size, not a maximum size for data. The maximum value for this field is 512 characters. Allowed values are 64, 128, 256 or 512. Default value is 512.)
Time Out	Defines the time delay between retries.
Retry	Defines the number of retries.
Default	Resets all fields to their default values.

Dx Packet

The Dx Packet dialog box allows to the user to define the directory and the name of each file where data is saved when MCL-Link Lite receives data records.

When it is necessary to add the terminal ID into each data record received from the terminal, the Terminal ID is placed onto the three first digits of the record.

Click on the *Dx Packet* button and the *Dx Packet* dialog box appears.

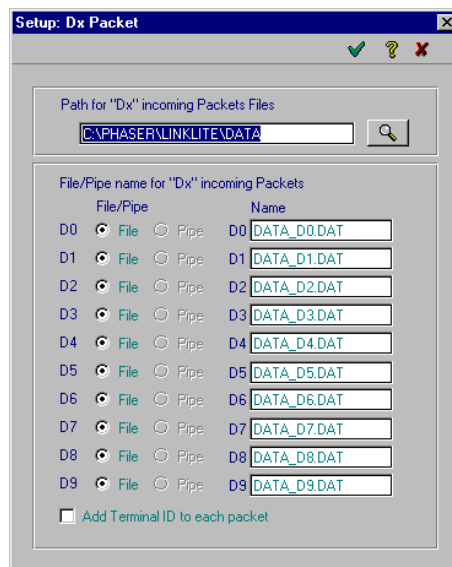
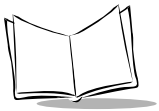


Figure 1-4. Setup: Dx Packet Dialog Box



Field	Description
Path For “Dx” Incoming Packets Files	Routes the packets to the specified directory. Click the <i>Browse</i> button to change directories.
File/Pipe Name For “Dx” Incoming Packets	Assigns a file name to each individual incoming packet. Lists packets D0 through D9 and their corresponding file names.
Add Terminal ID To Each Packet	Attaches the Terminal ID number to the front of the record. Deselect if this is not required.

Interface

The Interface dialog box allows the user to enable or disable some or all buttons of the MCL-Link Lite user interface.

Click on the *Interface* button and the *Interface* dialog box appears.

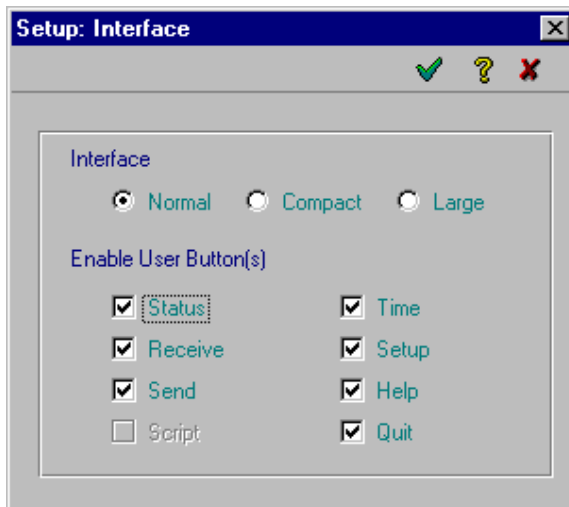


Figure 1-5. Setup: Interface Dialog Box

Field	Description
Interface	Determines the size of the window and buttons. When Compact Interface is chosen, only small buttons in a very small window appear on the screen. When Large Interface is chosen, more serial communication transactions can be displayed on the screen.
Enable User Button(s)	Enables the checked buttons. Deselect the check boxes to disable the corresponding buttons.



Using MCL-Link Lite

The MCL-Link Lite main window contains buttons to perform all the different functions necessary for maintaining the terminals.

Status

Click the *Status* button to initiate the status request operation for a specific terminal. The *Terminal Status* dialog box appears.

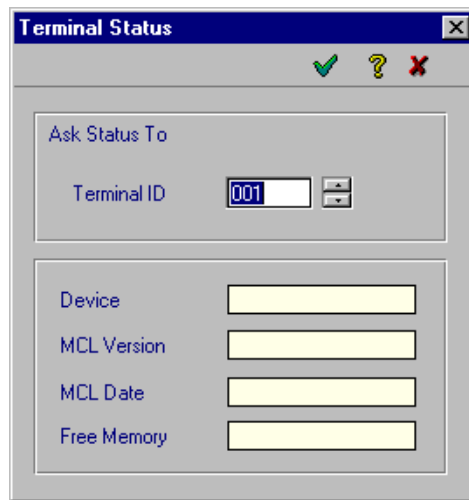


Figure 1-6. Terminal Status Window

The terminal sends the version number of the MCL-Code, its date and its free RAM.

Be sure the correct Host ID, Comm. Port and Speed are set before pressing STATUS, or the operation will not be successful.

Receive

Select the *Receive* button from the Link Lite main window to start the File Receive operation from terminal and store it onto the host. The *Receive* dialog box appears.

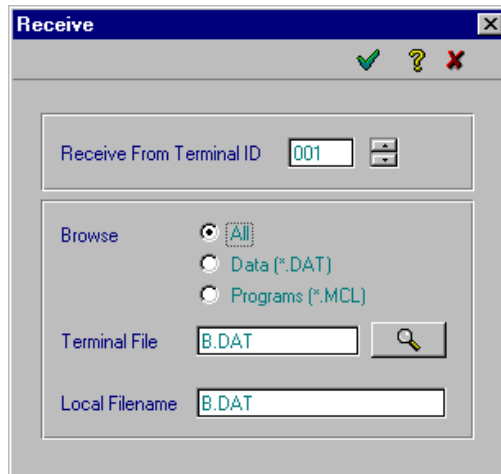


Figure 1-7. Receive Window

The *Browse* field determines which files to search for.

The *Magnification* button requests a directory status from the terminal and allows the user to select the desired file to be uploaded.

The file received from the terminal is placed in the directory *DATA* with the name specified in the *Local Filename* field.

The *Magnification* button opens a local (terminal) directory structure and allows the user to select the file or program that will be received from the terminal.

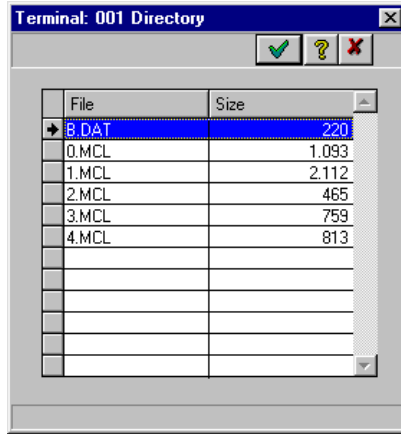
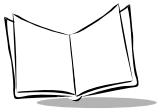


Figure 1-8. Terminal Directory

Send

Selecting the *Send* button on the main window starts the File Send operation from computer to terminal. An entire project (programs and data files), programs only or data files only may be sent to the terminal. The *Send* dialog box appears.

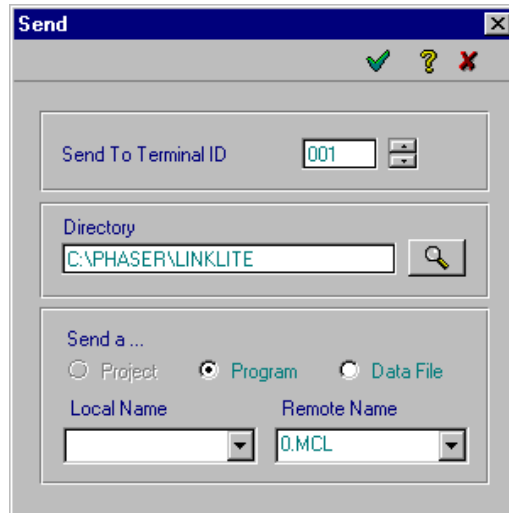


Figure 1-9. Send Window

The *Magnification* button opens a local (computer) directory structure and allows the user to select another directory to locate the file.

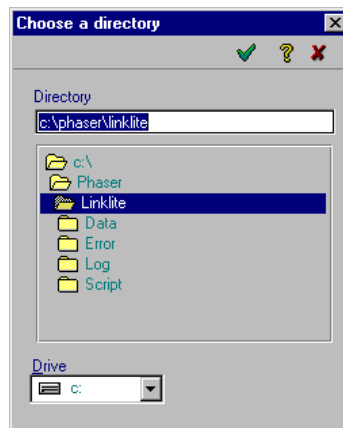


Figure 1-10. Computer Directory



The *Send a...* field determines what type of file to send to the terminal.

The *Local Name* field states the name of the file on the local computer, and *Remote Name* states the name that the file has on the terminal.

Time

Selecting the *Time* button provides the ability to synchronize the terminal. The date and hour is updated.

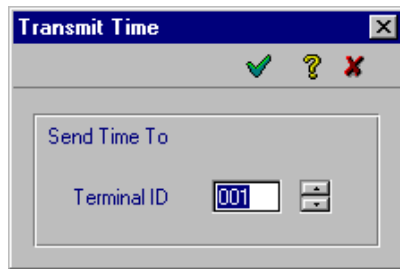


Figure 1-11. Transmit Time Window

About MCL-Link Lite Files

Table 1-1 lists the files associated with MCL-Link Lite.

Table 1-1. MCL-Link Lite File Descriptions

File	Description
MCLLINK.EXE	The executable program.
MCLLINK.HLP	The Windows Help file.
MCLLINK.INI	Contains the Setup information for MCL-Link.
MCLLINK.STA	Contains all status received from the terminals.
MCLLINK.ERR	Contains all transactions errors.
MCLLINK1.LOG	The Log files.

MCL-Link Lite Configuration File

The MCL-Link Lite configuration file is named MCLLINK.INI. This is an ASCII file and can be edited with a common text editor. All settings defined by the user (by the *Setup* button) are stored in this file. The values shown below are the default values.

General Communication Parameters

[MCLLINK]

Host=099	Host address (valid entries: 1 to 254).
Port=1	Defines the used comm. Port (1 = COM1, 2 = COM2 ...).
Speed=38400	Defines the communication speed.
RepMCLDes=C:\PHASER\LINK32	Defines the MCL-Link path.
RepMCLDes1=C:\PHASER\DESIGNER\SAMPLE.RJ	Defines the project path.

[LOG]

LogFile=1	Defines the log file mode. Valid entries are: 1 to 3.
LogSize=50000	Defines the max. size of the log file.
LogDate=ON	If ON current date is added to each log record.
LogTime=ON	If ON current time is added to each log record.
RecordLenMax=512	Defines the max size of each log record.
Path=C:\PHASER\LINK\LOG	

[PROTOCOL]

BlocSize=512	Defines the maximum size of each communication frame.
Protocol=14	Defines the Address base system and the type of file transfer.
BroadCastDelay=100	
TimeOut=2500	The maximum retry time-out (milliseconds).
Retry=2	Define the maximum number of retry.
Century=4	If equals 4 the date format is YYYY.



Other MCL-Link Lite Parameters

[USER_BT]

Interface=1	Defines the interface type.
User_Status=ON	Defines if interface button is visible.
User_Receive=ON	Defines if interface button is visible.
User_Send=ON	Defines if interface button is visible.
User_Time=ON	Defines if interface button is visible.
User_Setup=ON	Defines if interface button is visible.
User_Help=ON	Defines if interface button is visible.
User_Script=ON	Defines if interface button is visible.
User_Quit=ON	Defines if interface button is visible.

[DATA]

Path=C:\PHASER\LINK32\DATA	Defines the general path for data files.
DxPath=C:\PHASER\LINK32\DATA	Defines the path for files that stores data records D0..D9.
DATA_D0=DATA_D0.DAT	Defines the file name that stores data records D0.
DATA_D1=DATA_D1.DAT	Defines the file name that stores data records D1.
DATA_D2=DATA_D2.DAT	Defines the file name that stores data records D2.
DATA_D3=DATA_D3.DAT	Defines the file name that stores data records D3.
DATA_D4=DATA_D4.DAT	Defines the file name that stores data records D4.
DATA_D5=DATA_D5.DAT	Defines the file name that stores data records D5.
DATA_D6=DATA_D6.DAT	Defines the file name that stores data records D6.
DATA_D7=DATA_D7.DAT	Defines the file name that stores data records D7.
DATA_D8=DATA_D8.DAT	Defines the file name that stores data records D8.
DATA_D9=DATA_D9.DAT	Defines the file name that stores data records D9.
AddTermID=OFF	

Configuration File Example

```
[PROTOCOL]
BlocSize=512
Protocol=14
TimeOut=2500
TransactionTO=10000
Retry=3
Century=4
AnswerNK=OFF
BroadCastDelay=100
PacketDelay=0

[MCLINK]
Speed=38400
Host=099
Port=1
RepMCLDes=C:\PHASER\Designer\
RepMCLDes1=C:\PHASER\LINK
LastTO=001
Minimize=OFF
ScriptVersion=2

[LOG]
LogFile=1
LogSize=50000
LogDate=ON
LogTime=ON
Path=C:\PHASER\LINKLOG

[MODEM]

UseModem=0
ModemReset=ATZ0
ModemAnswer=ATS0=1
ModemAnswerCall=0
ModemTimeOut=30
DelayChar=,

[CR/CT]
Separator=7C
BinarySearch=Off

[USER_BT]
Interface=1
User_Status=ON
User_Receive=ON
User_Send=ON
```



User_Time=ON
User_Setup=ON
User_Help=ON
User_Script=ON
User_Quit=ON

[DATA]

Path=C:\PHASER\LINK\DATA
DxPath=C:\PHASER\LINK\DATA
DATA_D0=DATA_D0.DAT
DATA_D1=DATA_D1.DAT
DATA_D2=DATA_D2.DAT
DATA_D3=DATA_D3.DAT
DATA_D4=DATA_D4.DAT
DATA_D5=DATA_D5.DAT
DATA_D6=DATA_D6.DAT
DATA_D7=DATA_D7.DAT
DATA_D8=DATA_D8.DAT
DATA_D9=DATA_D9.DAT
AddTermID=OFF

[SCRIPT]

ScriptTrace=OFF

[DEBUG]

Trace=0

[STARTUP]

Script=STARTUP.CMD

[DEFAULT]

Rece1=
Rece2=
Send1=2
Send3=
Send4=

[ScreenPos]

ScreenPos=102,334

MCL-Link Error File

The MCLLINK.ERR file contains all transactions errors. The first two letters identify the error, followed by the date, time, terminal ID, and command.

Error When Initializing MCL-Link Lite

CA Cancel by User.

DE Demo mode (no communication)

PP Open port comm. Error

Choose another comm. port or close the application that uses this comm. port (close the DOS Box if needed).

PI Initialize port comm. Error

Choose another comm. port or close the application that uses this comm. port (close the DOS Box if needed).

Error In Transaction

ID Bad terminal identification.

The command received from the terminal is incorrect. Correct the MCL program.

TO Time Out error, no response from the terminal or the modem.

RJ Reject received.

MR Max retry.

XX Unknown command received from the terminal.

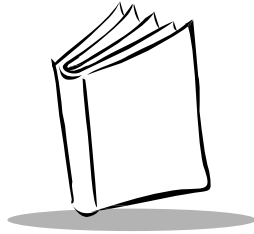
The command received from the terminal is incorrect. Correct the MCL program.



Troubleshooting

If you encounter any problems:

- Check that the data is sent correctly from your host (terminal ID, filename,...).
- Check that power is correctly applied to the cradle or PIM.
- Check that your terminal is powered ON and in MCL-Link mode.
- Check communication parameters on the terminal and host computer.
- Parameters must be set the same on both the terminal and the host computer.
- Check the RS232 parameters on host side (connected to good communication port, etc.).
- Check your RS232 cable.



Chapter 2

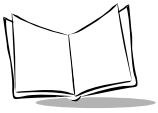
Command File

Introduction

[Table 2-1](#) lists the REMOTE commands that are sent by the terminal to the host computer.

Table 2-1. Remote Command s

Command	Description
D0 - D9	Receive Data Packet
CR	File Look-up from Terminal
TF	Transmit Data File to PC
FR	Data File Request from PC
SR	Status Request
NO xxx QX	Quit MCL-Link on PC
Note: xxx is the terminal ID (from 001 to 002).	



Syntax of Commands

| = Separator ASCII 124.

\ = Backslash character ASCII 92.

xxx = Terminal ID (range: 001 to 002).

Terminal_File_Name = The File Name in the terminal: a letter (from A to H) for data files, or a digit (from 0 to 8) for MCL programs.

PC_File_Name = The File Name on the PC Side. Contains the directory and file extension (if no directory is specified, the current one is used).

PHASER\LINK32\DATA Default File Path.

.DAT for Data file and .MCL for Default File Extension.
MCL program file

Commands Received From the Terminal

The following commands are MCL lines sent by the terminal to the host computer.

Receive Data Packet (D0-D9) From Terminal

Function

Sends data to appropriate data file.

Syntax

D0|*data*

where:

data = data added to the DATA_DX.DAT file.

Example

NO|099|**D0**|19971010|231022|1111

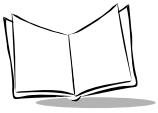
D0 = Data is appended in DATA_D0.DAT File in the general path.

D1 = Data is appended in DATA_D1.DAT File in the general path.

...

D9 = Data is appended in DATA_D9.DAT File in the general path.

The DATA_Dx.DAT file is created if it doesn't exist.



File Look-Up (CR) From Terminal

Function

Looks for data in a file.

Syntax

CR|*File_Name*|*Key_to_search*

where:

File_Name = name of file to search.

Key_to_search = data to search for.

Example

NO|099|**CR**|PARTS.DAT|1234567890123

File_Name is a text file sorted on a key, the key must be the first field in the file and the records length must be constant.

MCL-Link sends to the terminal a **CT** command with data from the record.

CT|0 = key not found

CT|1|Data_from_file = key found, data are the rest of the line

CT|9 = file not found

Transmit Remote Data File (TF) From Terminal

Function

Transmits a data file to the host computer.

Syntax

TF|*Terminal_File_Name*|*PC_File_Name*

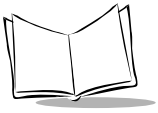
where:

Terminal_File_Name = represented by a letter (from A to H) for data files.

PC_File_Name = Full name that contains directory and file extension (if no directory is specified, the current one is used).

Example

NO|099|**TF**|A|C:\5CDATA\5CDATAFILE.DAT



Remote Data File Request (FR) From Terminal

Function

Requests a data file from the host computer.

Syntax

FR|PC_File_Name|Terminal_File_Name

where:

Terminal_File_Name = Represented by a letter (from A to H) for data files.

PC_File_Name = Full name that contains directory and file extension (if no directory is specified, the current one is used).

Example

NO|099|FR|C:\5CDATA\5CDATAFILE.DAT|A

Host Status Request (SR) From Terminal

Function

Requests status from the host computer.

Syntax

SR|1 query MCL-Link status

SR|3|PC_File_Name query a file status

where:

1 = MCL-Link.

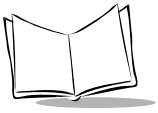
3 = a file.

PC_File_Name = a file on the host computer.

Example

NO|099|**SR|3|C:\5CDATA\5CITEM.DAT**

Request the status of the file C:\5CDATA\5CITEM.DAT.



Quit MCL-Link (QX) From Terminal

Function

Closes the MCL-Link program on the host computer.

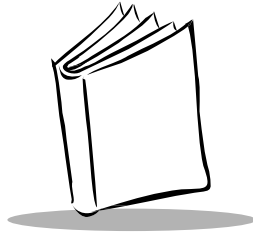
Syntax

QX

Example

NO|099|**QX**

Close the MCL-Link program.



Index

C

command syntax	2-2
commands from terminal	
Data File Request	2-6
File Look-Up	2-4
Quit	2-8
Receive Data Packet	2-3
Status Request	2-7
Transmit Data File	2-5
communication setup	1-5
configuration file	1-14

E

error messages	1-19
----------------	------

I

information, service	vi
installation	1-2
Introduction	1-1

M

MCL Collection	1-2
MCL-Link Lite files	1-14

N

notational conventions	v
------------------------	---

O

operating modes	1-3
-----------------	-----

R

receive file operation	1-10
related publications	vi
remote commands	2-1

S

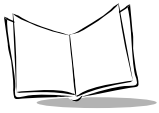
send file operation	1-12
setup	
Dx Packet	1-7
interface	1-8
protocol	1-6
service information	vi
starting MCL-Link Lite	1-3
symbol support center	vii

T

terminal status	1-10
transaction errors	1-19
transmit time	1-14
troubleshooting	1-20

U

using MCL-Link Lite	1-10
---------------------	------



MCL-Link Lite Version 2.11 User's Guide

Tell Us What You Think...

We'd like to know what you think about this Manual. Please take a moment to fill out this questionnaire and fax this form to: (631) 738-3318, or mail to:

Symbol Technologies, Inc.
One Symbol Plaza M/S B-4
Holtsville, NY 11742-1300
Attention: Technical Publications Manager

IMPORTANT: If you need product support, please call the appropriate customer support number provided. Unfortunately, we cannot provide customer support at the fax number above.

User's Manual Title: _____
(please include revision level)

How familiar were you with this product before using this manual?

- Very familiar Slightly familiar Not at all familiar

Did this manual meet your needs? If not, please explain.

What topics need to be added to the index, if applicable?

What topics do you feel need to be better discussed? Please be specific.

What can we do to further improve our manuals?
